

300-800 AD
Polynesian Voyagers arrive from Western Pacific

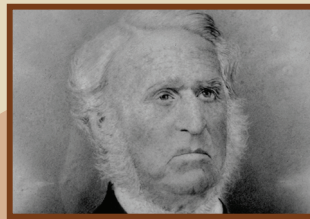
Circa 1736
Birth of King Kamehameha

1776
American Declaration of Independence, July 4th

1778
Captain James Cook sails into Kealahakua Bay, Hawai'i Island



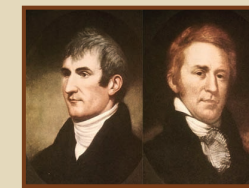
1790
John Palmer Parker I (John I) born in Massachusetts



1793
Captain George Vancouver gives seven head of cattle to King Kamehameha I.

1803
First horses arrive to the island.

1804
Louis & Clark expedition across the continental U.S.



1805
Sandalwood trade with China begins.

1810
King Kamehameha I unites the Hawaiian Islands as one kingdom.
John arrives on Hawai'i Island, and jumps ship to stay, eventually earning the King's trust.

1812 War of 1812

1817
John I marries Kipikane, granddaughter of King Kamehameha I.

1819
Kamehameha I passes.
John I and Kipikane's first child, Mary Ann Kaulalani, is born.
John I is given the King's permission to hunt wild cattle, and sell salt beef to ships.

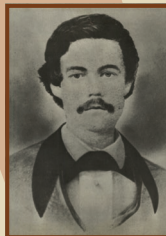


1820
Sandalwood trade at its height.
First whaling ship arrives.

1827 John Palmer Parker II (John 2) born to John and Kipikane.
First sugar mill built in Waimea.



1829
Ebenezer Parker born to John I and Kipikane.



1836 Battle of The Alamo in Texas.
Vaqueros, "paniolo," arrive from Spanish California at the request of King Kamehameha III.



1835
First sugar plantation in Hawai'i opens.

1845 John II and Hanai Leiakaula marry.



1848
The Great Mahele defines land ownership in Hawai'i for the first time.
Gold is discovered in California.

1855
John I builds Mana Hale.
Ebenezer Parker passes.

1860
John's wife Kipikane passes.
Ebenezer's 10-year-old son passes

1861 Ebenezer's wife Kilia passes.
American Civil War begins.



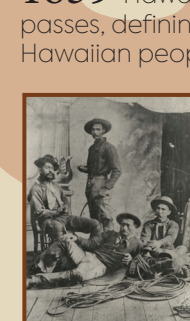
1862 John II and wife Hanai became foster parents to Ebenezer and Kilia's three children, Mary, Nancy and Samuel Parker.

1868 John I passes at age 78, the ranch's 47,000 acres are split between John II and Samuel.
Daughter Mary was left small plots for her children at Waiapuka in North Kohala. John II also receives two pieces of land at Waipi'o.



1872 Samuel purchases beach-front land at 'Ane-ho'omalū, and the old Purdy property, 640 acres, with five acres reserved for Purdy and his wife.

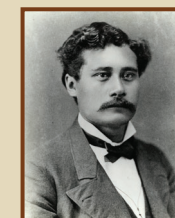
1873
John II becomes a highly respected figure in the community and is appointed a "Nobleman of the Kingdom."



1839 Hawaiian Bill of Rights passes, defining the rights of the Hawaiian people.

1877
David Kalākaua is elected the new King. A classmate and friend of Samuel Parker, he is a frequent visitor to Parker Ranch.

1849 Ebenezer Parker marries Kilia Nahulanui.



1852 Samuel Parker is born to Ebenezer and Kilia.

1851 John I leases Waikoloa land and purchases another 1,000 acres at Mana.

1853 Smallpox epidemic (Waimea, Kawaihōe)

1885 Parker Ranch is mortgaged to Bishop and Co. due to sugar failure. First Japanese immigrant laborers land in Hawai'i.

1886 Iolani Palace illuminated by the first electric lights in Hawai'i.

1887 Trustee Charles Bishop runs the Ranch operations.

1879 John II purchases the Puuopelu home and seven acres from Charles Notley for \$2,720. Sugar plantations spring up along the northwest area of Waimea, the western slopes of the Kohala Mountains and the eastern shores of Hāmākua.
Thomas Edison invents the electric light bulb.



175th Anniversary

Visit us at www.parkerranch.com

Follow us   

1891

John II passes. He and wife Hanai had adopted Samuel's son, John Palmer Parker III, who at age 16 inherited John II's half of the Ranch.

1898

Five years after the overthrow of the monarchy, U.S. Annexes Hawai'i as a Territory.

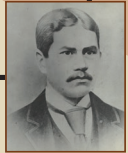
1893

January 17, Queen Lili'uokalani is deposed as the Kingdom of Hawai'i is overthrown. Samuel served as her Minister of Foreign Affairs.



1894

Thelma Kahiluonapua'api'ilani Parker born to John III and Elizabeth. John III passes.



John III marries Elizabeth Jane Lanakila Dowsett, later known as Aunt Tootsie.

1933-1943

Carter manages Parker Ranch with help from his son Hartwell.

1933

Richard Smart reaches legal maturity and inherits Parker Ranch, an area one half as large as Rhode Island. He chooses to leave management of the ranch to A.W. and Hartwell, and pursues a Broadway career. Will Rogers visits Parker Ranch.

1937

A.W. Carter completes the first concrete wharf at Kawaihae.

1941

Japanese fighters attack Pearl Harbor, beginning U.S. involvement in World War II.

1950-1953

Korean War

1949

A.W. Carter passes, and Hartwell manages the Ranch until 1960. Hawai'i Episcopal Academy opens (forerunner of Hawai'i Preparatory Academy).



1960

John F. Kennedy, Jr. elected president.

1962

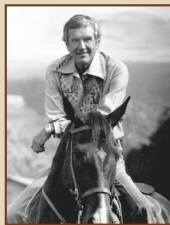
First Parker Ranch Horseraces and Rodeo. First statewide Quarter Horse show.

1995

The internet becomes fully available to the public for the first time.

1996

The last sugar cane plantation on the island closes.



2001

September 11th

2002

The Ranch downsizes, diversifies its land use.

2005

Parker Ranch sells Parker Ranch Shopping Center.



2019

DOE Land Exchange completed. Hale Kuawehi, first utility-scale energy project to be built on Parker Ranch, is approved by the PUC.

2021

Paniolo Hardwoods combines with Kamuela Hardwoods - Historic fire scorches 37,000 acres of Parker Ranch lands

2022

1909

Parker Ranch purchases the steamship "Bee" to ship cattle to Honolulu. Parker Ranch and five other ranches purchase Metropolitan Meat Co., Ltd in Honolulu.



1906

Samuel sells his interest to his granddaughter Thelma for \$600,000, giving her 100% ownership.



1903

Carter purchases Waikoloa Ahupua'a, 95,000 acres.



1904

Carter purchases Pu'uolo Sheep Ranch, \$26,000 for 4,000 acres of the of Ouli ahupua'a.

1907

Jack London visits the Ranch.

1908

Hawaii Island cowboys Ikua Purdy, Jack Low and Archie Ka'aua win the World Steer Roping Championship at Cheyenne Frontier Days.



1913

Richard Palmer Smart is born to Thelma and Gaillard. Carter secretly purchases Humu'ula Sheep Station which belonged to Sam Parker Jr., through an agent for Thelma.

1914

World War I begins.

Parker Ranch supplies horses to the U.S. Cavalry. Elizabeth Ella is born to Thelma and Gaillard in France. They left as the war was accelerating, however the child died before they reach New York.

Panama Canal opens.

Thelma dies of tuberculosis, leaving all of her shares of the Ranch Trust income to her husband, and nothing to her son Richard. A court battle follows; Richard's father becomes legal guardian, but Richard's grandmother, Aunt Tootsie, would have legal custody over him until he was 16.

1912

Thelma marries Gaillard Smart, a young man from Virginia. Carter purchases Kahuku Ranch at South Point.

1959 Hawai'i Statehood New Kawaihae Harbor is dedicated.



1975

Vietnam War ends.



1929

A catastrophic stock market crash begins the Great Depression.

1930

Thanks to A.W. Carter's strategic management, The Ranch has a fine herd of over 30,000 purebred Hereford cattle and the financial stability, to survive the depression without serious difficulty.



1963

Land at Kauna'oa beach sold to Laurance S. Rockefeller for Mauna Kea Beach Hotel.

1964

Anna Lindsey Perry-Fiske brings annual pageant "Old Hawai'i on Horseback". New Parker Ranch Office building is dedicated in town.

1965

Mauna Kea Beach Hotel dedicated. Hawai'i Cattlemen's Association Bull and Horse sale at the Ranch.

1973

Elvis Presley "Aloha From Hawaii"

1976

Parker School opens American Bicentennial

2012-2013 Parker Ranch partners with the Uluopono Initiative on grassfed beef production, and the Paniolo Cattle Company is formed.

2014 Paniolo Power Company established. North Hawaii Community Hospital becomes an affiliate of Queens Health Systems.

2017

Waimea District Park officially opens to the Public

2018

Parker Ranch internalizes sustainable Forestry operations

2020

6,000 lbs of beef donated to community as part of COVID-19 relief. First Parker Ranch woman board member, Kay Fukunaga

1988

Hyatt Regency Waikoloa opens.

1992

Richard Smart passes, leaving the Ranch in a beneficial Trust. Beneficiaries are North Hawai'i Community Hospital, Parker School, Hawai'i Preparatory Academy and the Richard Smart Fund of the Hawai'i Community Foundation. Parker Ranch Foundation Trust established.

1981

Sheraton Royal Waikoloan hotel opens.